

# RIDES





# LOGLINE

A COMEDY INSPIRED BY EVERYDAY LIFE. When a family's beloved home is unexpectedly lifted from its foundation and towed away over the course of one day, deep-seated conflicts surface between its four family members as they are challenged to discover the meaning of love. Set in the middle of a mid-size American city.

Format: Feature Film

Genre: Rom-com

References: Little Miss Sunshine, The Money Pit, All of My Heart

Status: Script available. Seeking director





# SYNOPSIS

Over the course of a single day, JULES (40's), CYNTHIA (40's), and their daughter, JULIE (14), find their lives and relationships turned upside down. Their gem-like 1930's Craftsman house, set between two downtown 20-story office buildings, is suddenly about to be detached from its foundation and towed away.

Physically and emotionally imposing, with a great lust for his wife and for food, and a vague echo of Jackie (The Honeymooners) Gleason, Jules is an experimental filmmaker. Though increasingly urgent notices from the city have been delivered to him for months, he has arrogantly disregarded them. At 2:00 in the morning, while Cynthia sleeps, he edits a film and eats pastry. Trim, neat, polite, and down-to-earth, Cynthia's unassuming nature echoes Alice (The Honeymooners) Kramden crossed with Stan Laurel.

Meanwhile, unknown to her parents, Julie is in her room making love with her new squeeze, 17-year-old BILLY. Later that day, her long-time true love, TOMMY (14), learns about Billy. After cold-shouldering her, he takes two girls to the school cellar for a threesome, which breaks Julie's heart.





In another part of town, Jules' kid brother CHRIS, a lithe, highly intelligent, and avid Zen practitioner, makes love in a park with an older woman he just met. She pushes for commitment; his only interest is Enlightenment. At dawn, he works on a city sanitation truck where his playfulness infuriates a brutish co-worker.


While the family sleeps, city workers scrutinize the house exterior. Then a city official arrives, wakes Cynthia, and announces that the house, through eminent domain, will be detached from its foundation and carried off. *That day.*

Already enraged with Jules for ignoring the notices, Cynthia comes undone when he almost destroys her large, beloved loom in a well-intentioned attempt to move it. Taking his prized samurai sword from the wall, she chases him out of the house and down the street. Meanwhile, a cavalcade of construction vehicles and an army of workers begin unfastening their house.

Throughout the day, Jules, the dreamer, imagines semi-surreal scenes of a silhouetted couple driving a mystery car through the night. When Julie returns from school, she discovers that her adored cat, PHOEBE, is dead. Assuming Jules is guilty, she ferociously attacks him - until he convinces her that a passing car ran her over. They bury her, then Chris arrives and comforts Julie with the notion of reincarnation.





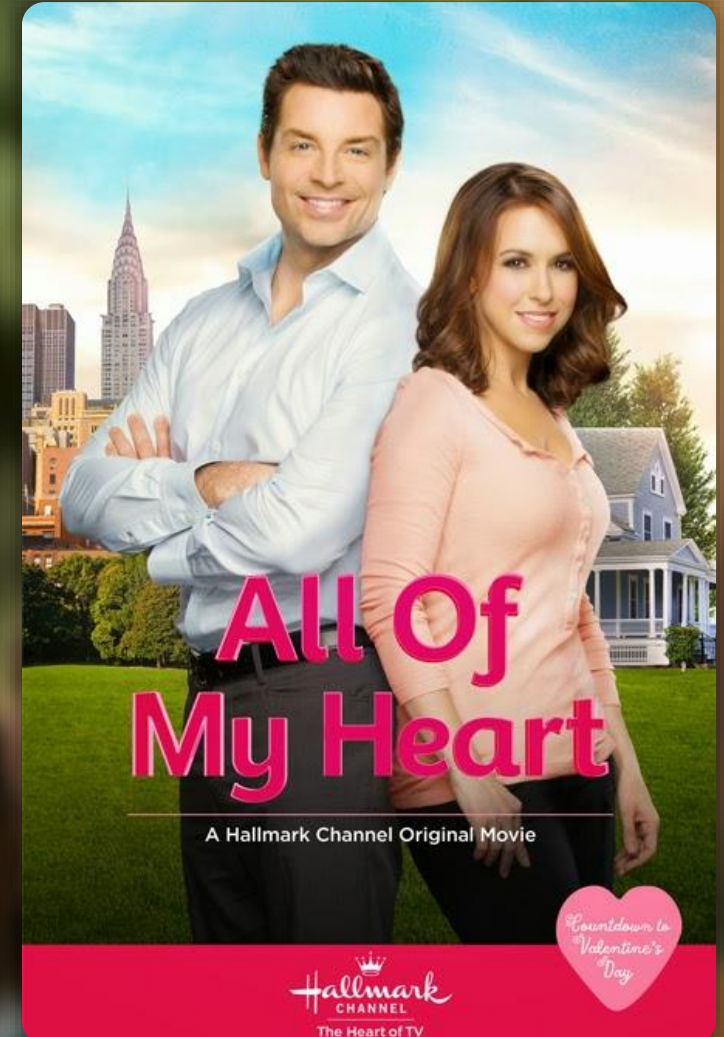


Then the brothers go at it: Chris teases Jules for his chaotic life; Jules ribs Chris for carting garbage rather than attending medical school. Meanwhile, Cynthia, having found her self-respect and inner authority, and Jules, having gained some humility, the couple reunite.

By the time a giant crane lifts the house into the air over a row of 300-year-old ginkgo trees and onto a wide trailer, the family comes together. Driving off into the night, Jules has re-bonded with everyone: he and Chris are affectionate, he and Julie at peace, and he and Cynthia in love.



# COMPARABLES





# CHARACTERS

**JULES (40's)** is a large, tall, slightly overweight, slightly unkempt, balding man with a ponytail, and a large presence. Physically and emotionally imposing, with a great lust for his wife and for food, Jules is an experimental filmmaker and would-be inventor. His unfounded self-confidence vaguely echoes Oliver Hardy and Jackie (The Honeymooners) Gleason.

**JULIE (14)**, is super cute, short, smart, independent, and adventurous, especially with teenage boys. Loving but rebellious, she is a challenge for her parents.

**CYNTHIA (40's)** trim, neat, and lovely, is a very responsible, caring woman on the cool side. Loyal, polite, intimidated, patient, no-nonsense, and somewhat guileless, her quiet, unassuming nature echoes Stan Laurel crossed with Alice (The Honeymooners) Kramden – until circumstances cause her to erupt with angry authority.

**CHRIS (early 30's)**, Jules' poised, kid brother, is tall, thin, very compassionate, and highly intelligent. Single, an avid Zen practitioner, and under-utilized as a worker on a city sanitation truck, he is relationally and professionally challenged.



# DREAM CAST

JULES



Paul Rudd



Seth Rogen



Jason Segel



Brooke Carter



Ryan Armstrong



Janic Le Ann Brown

JULIE

CYNTHIA



Keira Knightly



Emily Blunt



Carey Mulligan

CHRIS



Daniel Radcliff



Paul Mescal



Freddie Highmore